

Master-NEO 2

Article Master No.: 000485

Medium and high temperature hose for temperatures up to +135 °C, two layers



hydrolysis resistant



microbe resistant



compressible



very flexible



light



pressure resistant

Product Details

Construction / Material

- Type of construction: single or multi-layer spiral hose made of vulcanized fabric strips
- Spiral Design: made of steel wire
- Material of the spiral: Spring steel
- Execution of the wall: double-layered, Coating of neoprene
- Material of the inner layer: glass fabric
- Material of the outer layer: glass fabric
- Design of the cord: designed as twin cord
- Material of the cord: Glass fibre yarn

Properties

- Chemical Properties: good resistance to chemicals
- Flexibility: very flexible
- Weight: light
- Pressure Resistance: pressure resistant
- Colour: black

Operating Temperature

- Temperature Range: -35 - 135

- short-term maximum temperature: short-term -55 °C to 150 °C

Delivery Information

- Delivery, type of production: Various nominal widths in standard lengths are available ex-production, individual nominal widths and lengths also ex-stock

Application Areas

- Areas of application: Automotive, Plant & Mechanical Engineering, Industry, Aerospace technology, Ventilation & air-conditioning, Bulk & Construction, Sea & rail transport, Wood, Chemistry, Plastics, Conveying, lifting & feeding technology, Printing & Paper, Vehicle construction, Metal & Toolmaking

Customizing Options

- optional item modification (on request): other colours, other nominal widths, with customer-specific imprint, with spiral-free end sleeves, with plastic spiral

Article Variants

Extended Article Number	Article number	Nominal Size (DN) mm	Bending radius* mm	Weight kg/m	Operating pressure bar	Negative pressure bar	Max. Production length m	Stock Lengths m
000485:13:x	000485	13	15	0.16	2.80	0.64	4.00	
000485:19:x	000485	19	15	0.19	2.80	0.64	4.00	4.00
000485:25:x	000485	25	15	0.22	2.80	0.64	4.00	4.00
000485:30:x	000485	30	15	0.25	2.80	0.64	4.00	
000485:32:x	000485	32	16	0.27	2.70	0.62	4.00	4.00
000485:35:x	000485	35	17	0.30	2.70	0.59	4.00	
000485:38:x	000485	38	18	0.31	2.60	0.59	4.00	4.00
000485:41:x	000485	41	19	0.32	2.60	0.59	4.00	4.00
000485:42:x	000485	42	19	0.32	2.60	0.59	4.00	
000485:44:x	000485	44	21	0.34	2.60	0.55	4.00	4.00
000485:45:x	000485	45	21	0.34	2.60	0.55	4.00	
000485:51:x	000485	51	24	0.36	2.60	0.51	4.00	4.00
000485:55:x	000485	55	27	0.42	2.50	0.48	4.00	
000485:57:x	000485	57	28	0.43	2.50	0.48	4.00	4.00
000485:60:x	000485	60	31	0.47	2.40	0.47	4.00	4.00
000485:63:x	000485	63	31	0.49	2.40	0.47	4.00	4.00
000485:64:x	000485	64	31	0.49	2.40	0.47	4.00	
000485:65:x	000485	65	31	0.50	2.40	0.47	4.00	4.00
000485:70:x	000485	70	35	0.53	2.30	0.43	4.00	4.00
000485:76:x	000485	76	38	0.58	2.20	0.42	4.00	4.00
000485:80:x	000485	80	40	0.62	2.10	0.41	4.00	4.00
000485:83:x	000485	83	42	0.64	2.10	0.40	4.00	4.00
000485:90:x	000485	90	44	0.70	2.00	0.39	4.00	4.00
000485:91:x	000485	91	44	0.70	2.00	0.39	4.00	
000485:95:x	000485	95	48	0.73	1.90	0.36	4.00	4.00
000485:102:x	000485	102	52	0.77	1.90	0.34	4.00	4.00
000485:108:x	000485	108	55	0.83	1.70	0.30	4.00	4.00
000485:110:x	000485	110	57	0.85	1.70	0.29	4.00	

Extended Article Number	Article number	Nominal Size (DN) mm	Bending radius* mm	Weight kg/m	Operating pressure bar	Negative pressure bar	Max. Production length m	Stock Lengths m
000485:114:x	000485	114	57	0.89	1.60	0.28	4.00	4.00
000485:120:x	000485	120	61	0.94	1.60	0.28	4.00	
000485:127:x	000485	127	64	1.00	1.40	0.25	4.00	4.00
000485:130:x	000485	130	65	1.02	1.30	0.23	4.00	
000485:140:x	000485	140	70	1.11	1.30	0.19	4.00	4.00
000485:152:x	000485	152	75	1.20	1.20	0.17	4.00	4.00
000485:160:x	000485	160	80	1.28	1.10	0.15	4.00	
000485:165:x	000485	165	83	1.32	1.00	0.14	4.00	
000485:173:x	000485	173	87	1.40	1.00	0.13	4.00	
000485:180:x	000485	180	90	1.48	1.00	0.12	4.00	4.00
000485:203:x	000485	203	101	1.65	0.70	0.09	4.00	4.00
000485:229:x	000485	229	125	1.90	0.60	0.08	4.00	
000485:254:x	000485	254	150	2.14	0.50	0.07	4.00	4.00
000485:305:x	000485	305	210	2.58	0.30	0.04	4.00	4.00

All data refer to a medium and ambient temperature of +20°C.
 Specification of the bending radius related to the inside of the hose bend
 Subject to technical changes and colour deviations

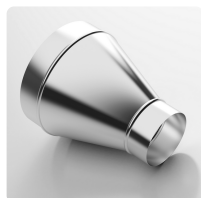
Delivery Variants

Available in other lengths, other nominal diameters, with customer-specific customer-specific imprint.

Possible Connection Elements



Hose connector
 Sheet steel connector for extending, connecting and joining light to medium-weight hoses



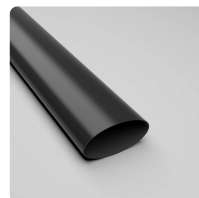
Hose Reducer, symmetrical
 Hose reducer for extending, connecting and joining light to medium weight hoses



Hose Clamp with Worm-Gear
 Standard clamp for fastening light hose types to connecting pieces on mobile and stationary installations



Hose Clamp with Worm-Gear, Steel quality W4, stainless steel 1.4301
 Standard clamp for fastening light hose types to connecting pieces on mobile and stationary installations



Heat Shrink Cuff
 Heat shrink sleeve for easy connection and sealing of hoses

Individual consultation

We offer consultation by phone:
 +49 209 97077-112

Product requests via masterflex.de/en

Address Headquarters

Masterflex SE
 Willy-Brandt-Allee 300
 45981 Gelsenkirchen

