

Master-PUR H HT 125

Article Master No.: 009027

Suction hose & Transport Hose, medium weight, constant temperature resistant up to 125 °C, good flexibility, permanently antistatic



antistatic



very flexible



medium heavy



moderately pressure resistant

Product Details

Construction / Material

- Type of construction: Profile extruded hose with metal spiral
- Spiral Design: made of steel wire
- Material of the spiral: Spring steel
- Execution of the wall: made of specified material, Wall thickness between the spirals approx. 1.4 mm
- Material of the wall: made of high temperature polyurethane (more temperature resistant than standard polyurethane)
- Specifications of the wall: Surface resistance $R_0 < 10^9$ Ohm, measured according to DIN EN ISO 8031

Properties

- Specifications of the product: according to TRGS 727 and ATEX 2014/34 EU
- Chemical Properties: good resistance to petrol, very good resistance to chemicals, good resistance to oil
- Flexibility: very flexible
- Weight: medium heavy
- Pressure Resistance: moderately pressure resistant

Operating Temperature

- Temperature Range: -30 - 125

- short-term maximum temperature: peaks to 150 °C

Delivery Information

Application Areas

- Areas of application: Plant & Mechanical Engineering, Robotics & Automation

Customizing Options

Article Variants

Extended Article Number	Article number	Nominal Size (DN) mm	Outer diameter mm	Bending radius* mm	Weight kg/m	Operating pressure bar	Negative pressure bar	Max. Production length m	Stock Lengths m
009027:25:x	009027	25	32	20	0.26	4.02	0.92	25.00	
009027:26:x	009027	26	33	20	0.26	3.99	0.92	25.00	
009027:38:x	009027	38	47	29	0.43	2.95	0.82	25.00	
009027:40:x	009027	40	49	30	0.45	2.83	0.82	25.00	10
009027:51:x	009027	51	61	38	0.64	2.58	0.82	25.00	10
009027:55:x	009027	55	65	42	0.75	2.58	0.76	25.00	
009027:60:x	009027	60	70	48	0.83	2.38	0.74	25.00	10
009027:63:x	009027	63	73	34	0.84	2.29	0.71	25.00	
009027:65:x	009027	65	75	53	0.90	2.23	0.66	25.00	
009027:70:x	009027	70	80	60	0.95	2.08	0.66	25.00	
009027:76:x	009027	76	87	71	1.05	1.88	0.59	25.00	
009027:80:x	009027	80	91	80	1.10	1.83	0.59	25.00	
009027:90:x	009027	90	101	93	1.22	1.48	0.52	25.00	
009027:102:x	009027	102	113	76	1.69	1.30	0.45	25.00	
009027:127:x	009027	127	138	123	1.85	1.13	0.31	25.00	
009027:152:x	009027	152	163	155	2.30	0.88	0.26	25.00	

All data refer to a medium and ambient temperature of +20°C.

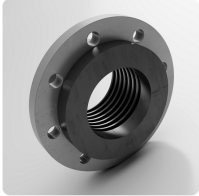
Specification of the bending radius related to the inside of the hose bend.

Subject to technical changes and colour deviations.

Delivery Variants

Available in other lengths, other nominal diameters, with customer-specific customer-specific imprint.

Possible Connection Elements



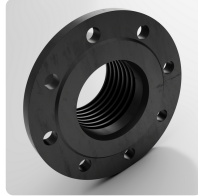
Combiflex PU Swivel Flange

screw-on plastic collar with loose flange for Master-PUR L, Master-PUR H, Master-PUR HX and Master-PUR Performance, for counterflanges acc. to DIN 2632 / DIN 2633 / DIN 2673



Combiflex PU Cone Flange, screwable

screw-on quick connector system for all Master-PUR L, Master-PUR H and Master-PUR HX hose types, following DIN 3016



Combiflex PU Fixed Flange

screw-on plastic flange for Master-PUR L, Master-PUR H, Master-PUR HX and Master-PUR Performance, for counterflanges according to DIN 2632 / DIN 2633 / DIN 2673



Combiflex PU Threaded Sockets

PU threaded connector for all Master-PUR L, Master-PUR H and Master-PUR HX hose types, based on DIN ISO 228



Hose Clamp with Bolts

special clamp for fastening medium and heavy spiral hoses to connection pipes on mobile and stationary units



Hose Clamp with Bolts, Steel quality W4, stainless steel 1.4301

Special clamp for fastening medium and heavy spiral hoses to connection pipes on mobile and stationary units

Individual consultation

We offer consultation by phone:
+49 209 97077-112

Product requests via
masterflex.de/en

Address Headquarters

Masterflex SE
Willy-Brandt-Allee 300
45981 Gelsenkirchen

