

Master-PUR LF Food A

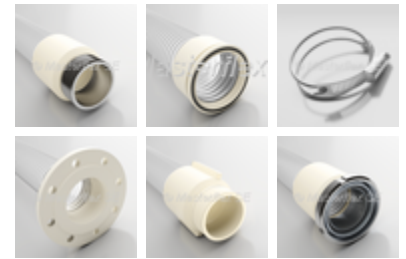
PU Suction & Transport Hose, super lightweight, food-grade quality acc. to EU 10/2011 and FDA, permanently antistatic



Technical Drawing



Connections



Construction



Material

- spiral: spring steel wire (stainless steel 1.4310)
- wall: pure polyether polyurethane, food-grade (FDA), with non-migratory permanent antistatic agent
- wall thickness between spirals approx. 0.5 mm

Applications

- Pharmaceutical industry
- Chemicals industry
- Food industry

Properties

- Manufacturing process according to GMP EC 2023/2006
- The hose conforms with EU Guideline 10/2011
- Approved for food-grade category: E (contact duration acc. to Test Report)
- The material of the wall complies with the FDA food regulations 21 CFR §

177.1680 and 21 CFR § 177.2600

- smallest bending radii
- permanently antistatic, surface resistance < 10⁹ Ohm
- highly flexible
- halogen free
- optimum flow characteristics
- microbe and hydrolysis-resistant
- abrasion-resistant
- very light
- odourless/tasteless
- good chemical resistance
- generally good UV and ozone resistance
- high tensile strength

Temperature Range

- -40°C to +90°C
- peaks to +125°C

Product Variations (**Please replace “x” with your desired hose length.)

DN	op. pressure	vacuum	bend radius	outer Ø	weight/m	old article no.	**new article no.	stock length	max. production length
	bar	bar	mm	mm	kg			m	m
40	0,82	0,24	20	46	0,28	310-040-571	000384:40:x	/	25
50	0,78	0,2	24	56	0,33	310-050-571	000384:50:x	/	25
51	0,78	0,2	25	57	0,34	310-051-571	000384:51:x	5/10/15	25
60	0,76	0,19	35	68	0,35	310-060-571	000384:60:x	/	25
70	0,61	0,16	40	78	0,41	310-070-571	000384:70:x	/	25
75	0,61	0,13	42	82	0,51	310-075-571	000384:75:x	/	25
76	0,61	0,13	43	83	0,53	310-076-571	000384:76:x	/	25
80	0,53	0,13	45	88	0,53	310-080-571	000384:80:x	/	25
90	0,46	0,09	50	99	0,6	310-090-571	000384:90:x	/	25
100	0,46	0,09	54	106	0,68	310-100-571	000384:100:x	/	25
102	0,46	0,09	55	108	0,69	310-102-571	000384:102:x	5/10	25
110	0,38	0,09	60	119	0,73	310-110-571	000384:110:x	/	25
120	0,38	0,09	65	129	0,82	310-120-571	000384:120:x	/	25
125	0,38	0,09	70	132	0,84	310-125-571	000384:125:x	/	25
127	0,38	0,09	70	134	0,85	310-127-571	000384:127:x	/	25
150	0,31	0,06	78	157	1,01	310-150-571	000384:150:x	/	25
152	0,3	0,06	80	159	1,02	310-152-571	000384:152:x	/	25
160	0,3	0,06	85	169	1,23	310-160-571	000384:160:x	/	25
180	0,23	0,06	95	189	1,38	310-180-571	000384:180:x	/	25
200	0,23	0,06	102	207	1,5	310-200-571	000384:200:x	/	25
203	0,23	0,06	105	210	1,52	310-203-571	000384:203:x	/	25
250	0,16	0,03	126	256	1,66	310-250-571	000384:250:x	/	25
254	0,15	0,03	130	260	1,65	310-254-571	000384:254:x	/	25
300	0,14	0,03	155	310	1,78	310-300-571	000384:300:x	/	25
315	0,14	0,03	162	325	1,87	310-315-571	000384:315:x	/	25
350	0,12	0,03	180	360	2,44	310-350-571	000384:350:x	/	25
400	0,12	0,03	210	410	3,04	310-400-571	000384:400:x	/	25

All data refers to a medium and ambient temperature of +20 °C.

* Refers to the inner hose lining
Subject to technical changes and colour deviations.

Available on request

- Available on request in other lengths, sizes.