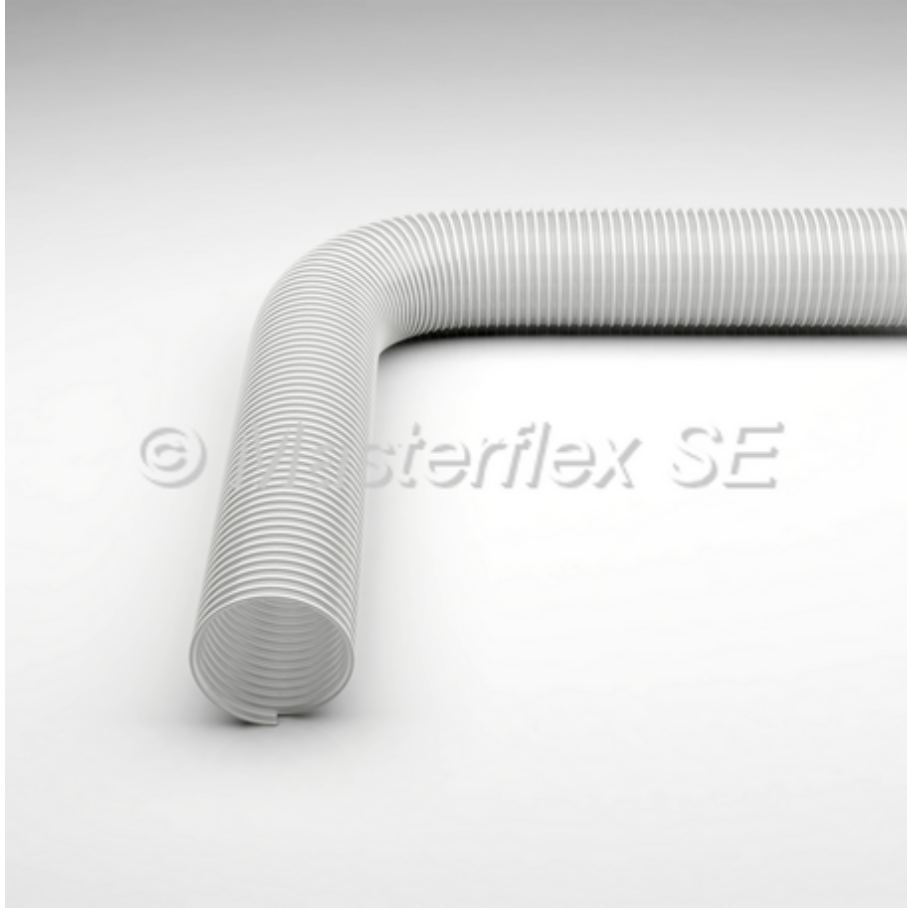


## Master-PUR HX Food A Multi

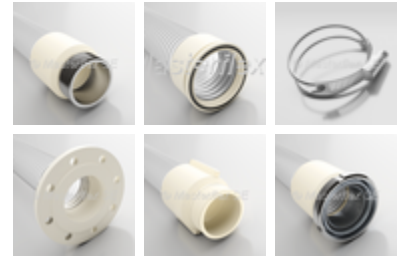
**PU suction & Transport Hose, heavy-duty, food-grade quality acc. to EU 10/2011 and FDA, permanently antistatic**



Technical Drawing



Connections



Construction



### Material

- spiral: spring steel wire (stainless steel 1.4310)
- wall: pure polyether polyurethane, food-grade (FDA), with non-migratory permanent antistatic agent
- wall thickness between spirals approx. 1.7 - 2.1 mm, depending on DN

### Applications

- Pharmaceutical industry
- Chemicals industry
- Food industry

### Properties

- The hose conforms with EU Guideline 10/2011
- Approved for food-grade categories: A, B, C, D1, D2, E (contact durations acc. to Test Report)
- The material of the wall complies with the FDA food regulations 21 CFR §

177.1680 and 21 CFR § 177.2600

- extremely abrasion resistant via specific reinforcements underneath the spiral
- approved acc. to TRGS 727 and ATEX 2014/34 EU. [Details acc. to certificate](#)
- permanently antistatic, surface resistance < 10<sup>9</sup> Ohm
- heavy
- flexible
- halogen free
- optimum flow characteristics
- mostly smooth inner lining
- odourless/tasteless
- microbe and hydrolysis-resistant
- increased pressure and vacuum resistance
- good chemical resistance
- high tensile strength
- generally good UV and ozone resistance

### Temperature Range

- -40°C to +90°C
- peaks to +125°C

### Product Variations (\*\*Please replace “x” with your desired hose length.)

DN	op. pressure	vacuum	bend radius	outer Ø	weight/m	old article no.	**new article no.	max. production length
	bar	bar	mm	mm	kg			m
50	4,02	0,94	123	60	1,02	114-050-571	000170:50:x	20
51	4	0,94	125	61	1,04	114-051-571	000170:51:x	20
55	3,75	0,89	140	65	1,1	114-055-571	000170:55:x	20
60	3,6	0,89	150	70	1,2	114-060-571	000170:60:x	20
65	3,3	0,89	165	75	1,29	114-065-571	000170:65:x	20
70	3,15	0,89	175	80	1,38	114-070-571	000170:70:x	20
75	2,96	0,89	188	86	1,57	114-075-571	000170:75:x	20
76	2,92	0,89	190	87	1,61	114-076-571	000170:76:x	20
80	2,77	0,89	200	93	1,93	114-080-571	000170:80:x	20
90	2,4	0,89	225	103	2,16	114-090-571	000170:90:x	20
100	2,15	0,87	246	113	2,53	114-100-571	000170:100:x	20
102	2,1	0,87	250	115	2,6	114-102-571	000170:102:x	20
110	1,95	0,87	275	124	2,82	114-110-571	000170:110:x	20
115	1,8	0,87	290	129	2,94	114-115-571	000170:115:x	20
120	1,65	0,87	300	134	3,07	114-120-571	000170:120:x	20
125	1,65	0,87	310	138	3,33	114-125-571	000170:125:x	20
127	1,65	0,87	315	140	3,44	114-127-571	000170:127:x	20
130	1,65	0,84	325	145	3,54	114-130-571	000170:130:x	20
140	1,5	0,83	350	153	3,81	114-140-571	000170:140:x	20
150	1,5	0,82	433	165	4,08	114-150-571	000170:150:x	20
152	1,5	0,82	450	167	4,13	114-152-571	000170:152:x	20

All data refers to a medium and ambient temperature of +20 °C.

\* Refers to the inner hose lining

Subject to technical changes and colour deviations.

Available on request

- Available on request in the above listed lengths, sizes and colours.  
Alternatively, also available with print.