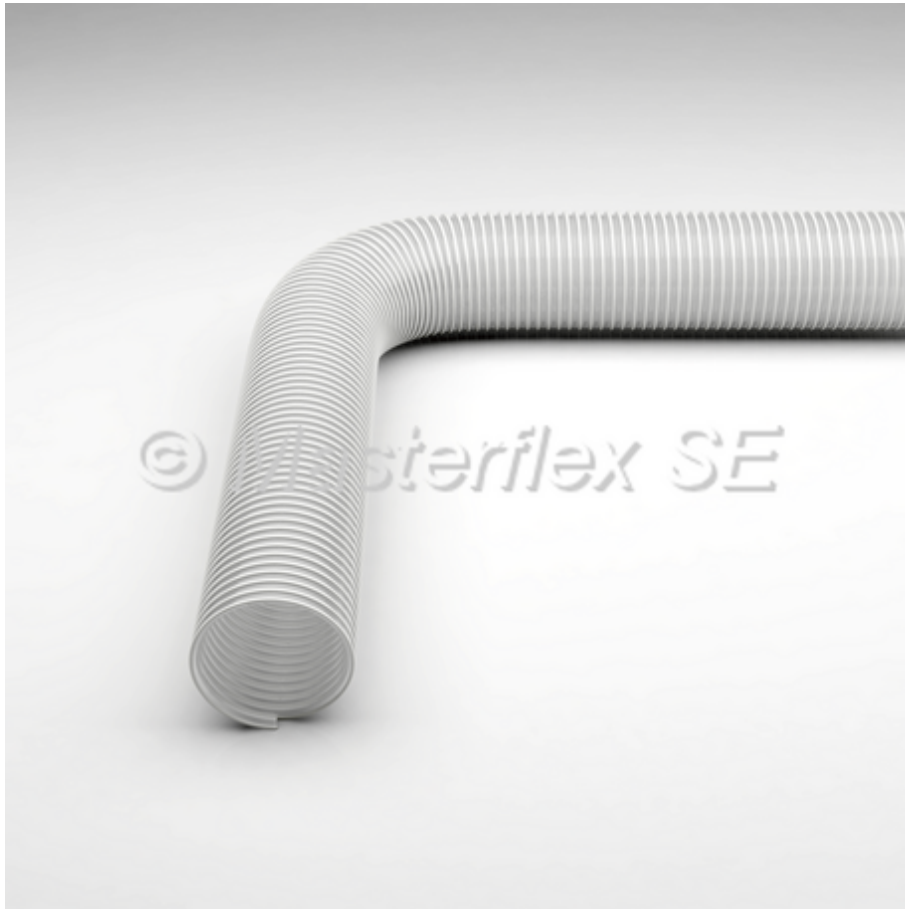


Master-PUR HX Food

PU Suction & Transport Hose, heavy-duty, food-grade quality acc. to EU 10/2011 and FDA



Technical Drawing



Connections



Construction



Material

- spiral: spring steel wire (stainless steel 1.4310)
- wall: pure polyether polyurethane, food-grade quality (FDA)
- wall thickness between spirals approx. 1.7 - 2.1 mm, depending on DN

Applications

- Pharmaceutical industry
- Chemicals industry
- Food industry

Properties

- The hose conforms with EU Guideline 10/2011
- Approved for food-grade categories: A, B, C, D1, D2, E (contact durations acc. to Test Report)
- materials comply with the following food regulations:
 - FDA 21 CFR §177.2600
 - FDA 21 CFR §178.2010

- extremely abrasion resistant via specific reinforcements underneath the spiral
- heavy
- flexible
- halogen free
- optimum flow characteristics
- mostly smooth inner lining
- odourless/tasteless
- microbe and hydrolysis-resistant
- increased pressure and vacuum resistance
- good chemical resistance
- high tensile strength
- generally good UV and ozone resistance
- acc. to TRGS 727 and ATEX 2014/34 EU, with earthing at both ends of the spiral for non-flammable dust/bulk solids in Zone 22. For gases/liquids with low conductivity of electrostatic charges in Zone 2.

Temperature Range

- -40°C to +90°C
- peaks to +125°C

Product Variations (**Please replace “x” with your desired hose length.)

DN	op. pressure	vacuum	bend radius	outer Ø	weight/m	old article no.	**new article no.	stock length	max. production length
	bar	bar	mm	mm	kg			m	m
32	4,85	0,94	80	42	0,66	114-032-501	000160:32:x	/	20
40	4,27	0,94	100	50	0,83	114-040-501	000160:40:x	/	20
50	4,02	0,94	123	60	1,02	114-050-501	000160:50:x	/	20
51	4	0,94	125	61	1,04	114-051-501	000160:51:x	5/10	20
55	3,75	0,89	140	65	1,1	114-055-501	000160:55:x	/	20
60	3,6	0,89	150	70	1,2	114-060-501	000160:60:x	/	20
65	3,3	0,89	165	75	1,29	114-065-501	000160:65:x	/	20
70	3,15	0,89	175	80	1,38	114-070-501	000160:70:x	/	20
75	2,96	0,89	188	86	1,57	114-075-501	000160:75:x	/	20
76	2,92	0,89	190	87	1,61	114-076-501	000160:76:x	/	20
80	2,77	0,89	200	93	1,93	114-080-501	000160:80:x	/	20
90	2,4	0,89	225	103	2,16	114-090-501	000160:90:x	/	20
100	2,15	0,87	246	113	2,53	114-100-501	000160:100:x	/	20
102	2,1	0,87	250	115	2,6	114-102-501	000160:102:x	/	20
110	1,95	0,87	275	124	2,82	114-110-501	000160:110:x	/	20
115	1,8	0,87	290	129	2,94	114-115-501	000160:115:x	/	20
120	1,65	0,87	300	134	3,07	114-120-501	000160:120:x	/	20
125	1,65	0,87	310	138	3,33	114-125-501	000160:125:x	/	20
127	1,65	0,87	315	140	3,44	114-127-501	000160:127:x	/	20
130	1,65	0,84	325	145	3,54	114-130-501	000160:130:x	/	20
140	1,5	0,83	350	153	3,81	114-140-501	000160:140:x	/	20
150	1,5	0,82	433	165	4,08	114-150-501	000160:150:x	/	20
152	1,5	0,82	450	167	4,13	114-152-501	000160:152:x	/	20

All data refers to a medium and ambient temperature of +20 °C.

* Refers to the inner hose lining

Subject to technical changes and colour deviations.

Available on request

- Available on request in other lengths, sizes.