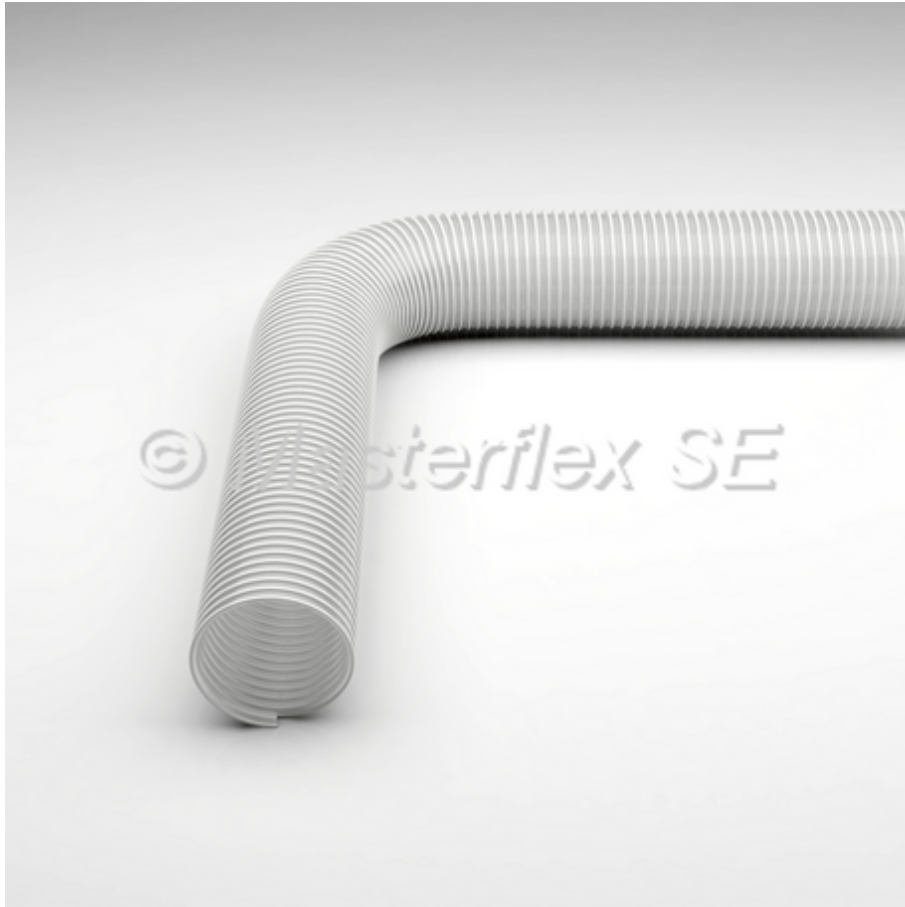


Master-PUR HX Food A

PU suction & Transport Hose, heavy-duty, food-grade quality acc. to EU 10/2011 and FDA, permanently antistatic



Technical Drawing



Connections



Construction



Material

- spiral: spring steel wire (stainless steel 1.4310)
- wall: pure polyether polyurethane, food-grade (FDA), with non-migratory permanent antistatic agent
- wall thickness between spirals approx. 1.7 - 2.1 mm, depending on DN

Applications

- Pharmaceutical industry
- Chemicals industry
- Food industry

Properties

- Manufacturing process according to GMP EC 2023/2006
- The hose conforms with EU Guideline 10/2011
- Approved for food-grade category: E (contact duration acc. to Test Report)
- The material of the wall complies with the FDA food regulations 21 CFR §

177.1680 and 21 CFR § 177.2600

- extremely abrasion resistant via specific reinforcements underneath the spiral
- permanently antistatic, surface resistance <math> < 10^9 </math> Ohm
- heavy
- flexible
- halogen free
- optimum flow characteristics
- microbe and hydrolysis-resistant
- mostly smooth inner lining
- odourless/tasteless
- good chemical resistance
- increased pressure and vacuum resistance
- generally good UV and ozone resistance
- high tensile strength

Temperature Range

- -40°C to +90°C
- peaks to +125°C

Product Variations (**Please replace "x" with your desired hose length.)

DN	op. pressure	vacuum	bend radius	outer Ø	weight/m	article no.	**new article no.	stock length	max. production length
	bar	bar	mm	mm	kg			m	m
32	4,85	0,94	80	42	0,66	114-032-581	000157:32:x	/	20
40	4,27	0,94	100	50	0,83	114-040-581	000157:40:x	/	20
50	4,02	0,94	123	60	1,02	114-050-581	000157:50:x	/	20
51	4	0,94	125	61	1,04	114-051-581	000157:51:x	/	20
55	3,75	0,89	140	65	1,1	114-055-581	000157:55:x	/	20
60	3,6	0,89	150	70	1,2	114-060-581	000157:60:x	/	20
65	3,3	0,89	165	75	1,29	114-065-581	000157:65:x	/	20
70	3,15	0,89	175	80	1,38	114-070-581	000157:70:x	/	20
75	2,96	0,89	188	86	1,57	114-075-581	000157:75:x	/	20
76	2,92	0,89	190	87	1,61	114-076-581	000157:76:x	/	20
80	2,77	0,89	200	93	1,93	114-080-581	000157:80:x	/	20
90	2,4	0,89	225	103	2,16	114-090-581	000157:90:x	/	20
100	2,15	0,87	246	113	2,53	114-100-581	000157:100:x	/	20
102	2,1	0,87	250	115	2,6	114-102-581	000157:102:x	/	20
110	1,95	0,87	275	124	2,82	114-110-581	000157:110:x	/	20
115	1,8	0,87	290	129	2,94	114-115-581	000157:115:x	/	20
120	1,65	0,87	300	134	3,07	114-120-581	000157:120:x	/	20
125	1,65	0,87	310	138	3,33	114-125-581	000157:125:x	/	20
127	1,65	0,87	315	140	3,44	114-127-581	000157:127:x	/	20
130	1,65	0,84	325	145	3,54	114-130-581	000157:130:x	/	20
140	1,5	0,83	350	153	3,81	114-140-581	000157:140:x	/	20
150	1,5	0,82	433	165	4,08	114-150-581	000157:150:x	/	20
152	1,5	0,82	450	167	4,13	114-152-581	000157:152:x	/	20

All data refers to a medium and ambient temperature of +20 °C.

* Refers to the inner hose lining

Subject to technical changes and colour deviations.

Available on request

- Available on request in the above listed lengths, sizes and colours.
Alternatively, also available with print.