

## Master-PUR Inline

Article Master No.: 000195

PU Suction hose & Transport Hose, extremely abrasion resistant, vacuum proof, seamless, very smooth inner lining, antistatic, microbe-resistant



antistatic



hydrolysis  
resistant



microbe  
resistant



transparen  
t



flexible



heavy



very  
pressure  
resistant

### Product Details

#### Construction / Material

- Type of construction: Profile extruded hose with metal spiral
- Spiral Design: made of steel wire
- Material of the spiral: Spring steel
- Execution of the wall: made of pure material, made of specified material, Addition of a non-migrating permanent antistatic agent, Wall thickness between the spirals approx. 5.5 mm
- Material of the wall: Polyurethane
- Specifications of the wall: Surface resistance  $R_0 < 10^9$  Ohm, measured according to DIN EN ISO 8031
- Specifications of the inner layer: extremely abrasion-resistant, super-strong inliner made of polyurethane 60° Shore A

#### Properties

- Specifications of the product: according to TRGS 727 and ATEX 2014/34 EU
- Chemical Properties: microbe-resistant, halogen-free, good resistance to chemicals, good UV resistance, good resistance to oil, good resistance to petrol, good ozone resistance, plasticiser-free
- Flexibility: flexible
- Physical Properties: permanently antistatic
- Weight: heavy

- **Pressure Resistance:** very pressure resistant
- **Colour:** transparent
- **Other:** high vacuum and good pressure resistance, particularly smooth on the inside, Configurable as a hose system with digital interface for compatibility with the AMPIUS® app

### Operating Temperature

- **Temperature Range:** -40 - 90
- **short-term maximum temperature:** peaks to 125 °C

### Delivery Information

- **Delivery, type of production:** Various nominal widths in standard lengths are available ex-production, individual nominal widths and lengths also ex-stock

### Application Areas

- **Areas of application:** Industry, Bulk & Construction, Chemistry, Food & Pharma, Waste disposal & cleaning technology, Plastics, Textile, Metal & Toolmaking

### Customizing Options

- **optional item modification (on request):** other colours, other lengths, other nominal widths, with customer-specific imprint

## Article Variants

Extended Article Number	Article number	Nominal Size (DN) mm	Outer diameter mm	Bending radius* mm	Weight kg/m	Operating pressure bar	Negative pressure bar	Max. Production length m	Stock Lengths m
000195:38:x	000195	38	56	150	1.72	4.65	0.94	20.00	
000195:40:x	000195	40	58	160	1.79	4.50	0.94	20.00	
000195:51:x	000195	51	70	200	1.64	4.13	0.94	20.00	2.50, 5.00, 7.50, 10, 20
000195:65:x	000195	65	85	300	2.02	3.90	0.94	20.00	2.50, 5.00, 7.50, 10, 15, 20
000195:76:x	000195	76	97	400	3.44	3.75	0.94	20.00	2.50, 5.00, 7.50, 10, 15, 20
000195:80:x	000195	80	99	410	2.69	3.38	0.94	20.00	2.50, 5.00, 7.50, 10, 15, 20
000195:102:x	000195	102	122	430	4.39	3.00	0.94	20.00	2.50, 5.00, 7.50, 10, 15, 20
000195:115:x	000195	115	136	440	4.90	2.60	0.94	15.00	
000195:127:x	000195	127	148	450	5.69	2.40	0.94	15.00	2.50, 5.00, 7.50, 10, 15
000195:152:x	000195	152	175	600	7.30	1.95	0.94	15.00	
000195:175:x	000195	175	198	700	7.48	1.80	0.77	10.00	
000195:180:x	000195	180	202	700	7.68	1.65	0.75	10.00	
000195:200:x	000195	200	223	800	10.01	1.35	0.67	10.00	2.50, 5.00, 7.50, 10
000195:203:x	000195	203	227	800	10.20	1.35	0.67	10.00	
000195:250:x	000195	250	271	1000	12.07	0.95	0.50	10.00	

All data refer to a medium and ambient temperature of +20°C.

Specification of the bending radius related to the inside of the hose bend

Subject to technical changes and colour deviations

## Delivery Variants

Available in other lengths, other nominal diameters, with customer-specific customer-specific imprint.

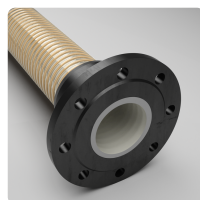
## Possible Connection Elements



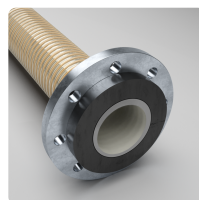
**Hose Clamp with Bolts**  
special clamp for fastening medium and heavy spiral hoses to connection pipes on mobile and stationary units



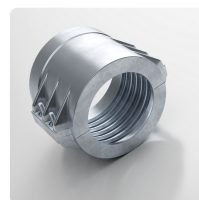
**Hose Clamp with Bolts, Steel quality W4, stainless steel 1.4301**  
Special clamp for fastening medium and heavy spiral hoses to connection pipes on mobile and stationary units



**Combiflex Cast-on PU Fixed Flange**  
Fixed PU flange for all Master-PUR hoses, for counterflanges to DIN 2632 / DIN 2633 / DIN 2673



**Combiflex Cast-on PU Swivel Flange**  
Fixed cast-on PU loose flange for all Master-PUR hoses, for counterflanges to DIN 2632 / DIN 2633 / DIN 2673



**Clamp Collars, screwed**  
Clamp collars according to DIN EN 14420-3



**Combiflex PU Cone Flange permanently installed**  
fixed quick connector system for all Master-PUR L, Master-PUR H and Master-PUR HX hoses, following DIN 3016

### Individual consultation

We offer consultation by phone:  
+49 209 97077-112

Product requests via  
[masterflex.de/en](http://masterflex.de/en)

### Address Headquarters

Masterflex SE  
Willy-Brandt-Allee 300  
45981 Gelsenkirchen

